

conceptkanva

In the RED of Creative Excellence!



conceptkanva.com



WE CREATE
BRANDS
WITH HEART



At **ConceptKanva**, red is more than our colour - it's the pulse of who we are. It reflects our passion, our proactive approach, and the service-driven zeal and ideas that move people.

Every brand we work with adds a layer to our story, diverse in industry yet united by purpose. Together, these layers form the many colours of our creative heart - a symbol.

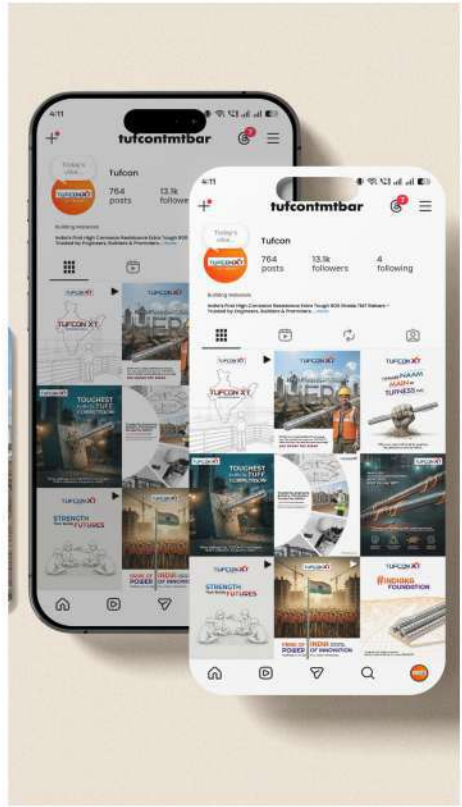
We are a multidisciplinary team driven by strategy and storytelling, crafting brand experiences across advertising, design, digital, events and integrated campaigns.

Because great brands are not just built; they are felt!



WORKS

Industrial



TUFFEST
SE BHI
TUFF



India's Toughest
REBARS
For India's Toughest
FOUNDATIONS

TUFCON XT
THE REBAR

India's First High Corrosion Resistance Extra Tough 600 Grade TMT Rebars.
Trusted by Engineers, Builders & Promoters Across the Nation.



- ✓ **600 GRADE.**
- ✓ **EXTRA TOUGH**
- ✓ **HIGH CORROSION RESISTANCE.**

TUFCON XT
THE REBAR

India's First High Corrosion Resistance Extra Tough 600 Grade TMT Rebars.
Trusted by Engineers, Builders & Promoters Across the Nation.

TUFFEST
SE BHI
TUFF

INDIA BAN RAHA HAI
XTRA TOUGH



TUFCON XT
THE REBAR

India's First High Corrosion Resistance Extra Tough 600 Grade TMT Rebars.
Trusted by Engineers, Builders & Promoters Across the Nation.

RARE & TUFF

Strength that's not ordinary...
IT'S RARE.

TUFCON XT — TMT REBAR —
India's First High Corrosion Resistance Extra Tough 600 Grade TMT Rebars.
TRUSTED BY ENGINEERS, BUILDERS & PROMOTERS ACROSS THE NATION.

Forged with
INNOVATION.

Designed for
ENDURANCE.

TUFCON XT — TMT REBAR —
India's First High Corrosion Resistance Extra Tough 600 Grade TMT Rebars.
TRUSTED BY ENGINEERS, BUILDERS & PROMOTERS ACROSS THE NATION.

STANDS...

where others
BENDS.

TUFCON XT — TMT REBAR —
India's First High Corrosion Resistance Extra Tough 600 Grade TMT Rebars.
TRUSTED BY ENGINEERS, BUILDERS & PROMOTERS ACROSS THE NATION.

**TUFFEST
SE BHI
TUFF**

India Ban Raha Hai Xtra Tough

TUFCON XT — TMT REBAR —
India's First High Corrosion Resistance Extra Tough 600 Grade TMT Rebars.
TRUSTED BY ENGINEERS, BUILDERS & PROMOTERS ACROSS THE NATION.

Jahaan Tuffness hai, wahaan Pride bhi hai.



TUFCON XT
- TMT REBAR -

India's First High Corrosion Resistance
Extra Tough 600 Grade TMT Rebars.

tufcon.com

TRUSTED BY ENGINEERS, BUILDERS & PROMOTERS ACROSS THE NATION.

Crafted for India's monumental strength.



TUFCON XT
- TMT REBAR -

India's First High Corrosion Resistance
Extra Tough 600 Grade TMT Rebars.

tufcon.com

TRUSTED BY ENGINEERS, BUILDERS & PROMOTERS ACROSS THE NATION.

From our soil, for our nation-
The pride of Indian Steel.



TUFCON XT
- TMT REBAR -

India's First High Corrosion Resistance
Extra Tough 600 Grade TMT Rebars.

tufcon.com

TRUSTED BY ENGINEERS, BUILDERS & PROMOTERS ACROSS THE NATION.

TUFFEST *se bhi* **TUFF**
India Ban Raha Hai Xtra Tough

TUFCON XT
- TMT REBAR -

India's First High Corrosion Resistance
Extra Tough 600 Grade TMT Rebars.

tufcon.com

TRUSTED BY ENGINEERS, BUILDERS & PROMOTERS ACROSS THE NATION.

HINDUSTAN
HYDRAULICS



Free to be flawless!

HAPPY INDEPENDENCE DAY



Proudly Indian Since 1965

www.hindustanhydraulics.com

HINDUSTAN
HYDRAULICS
SINCE 1965

Tied together with precision and excellence



HAPPY
Raksha
Sandhan

www.hindustanhydraulics.com

HINDUSTAN
HYDRAULICS

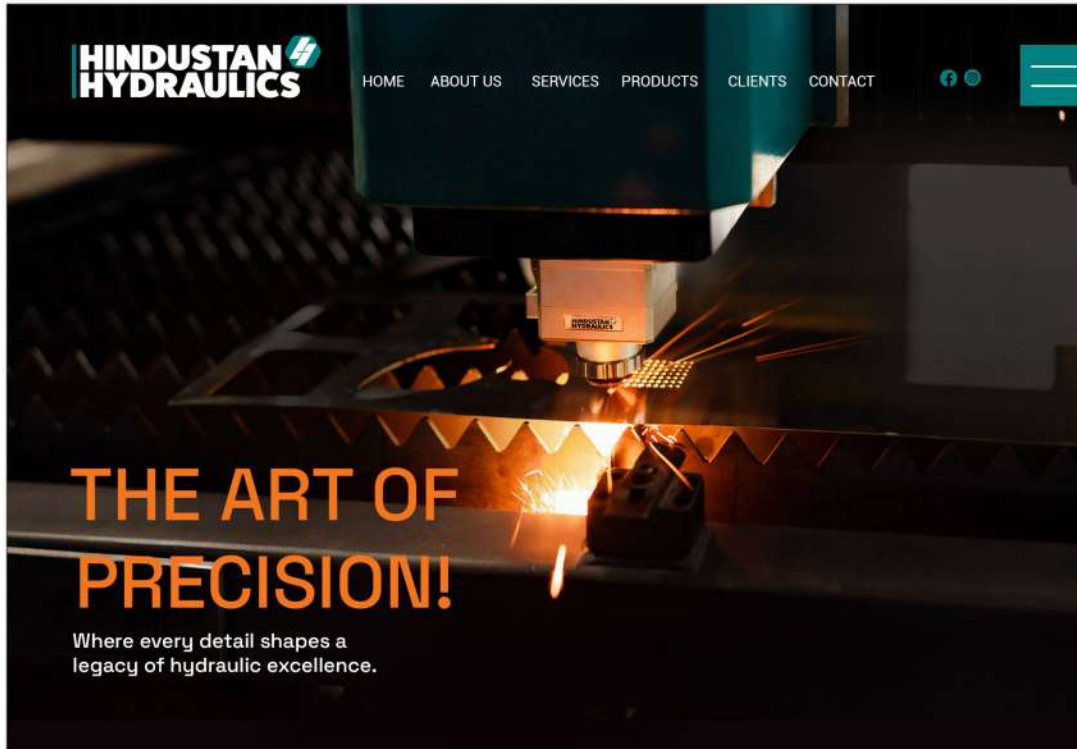


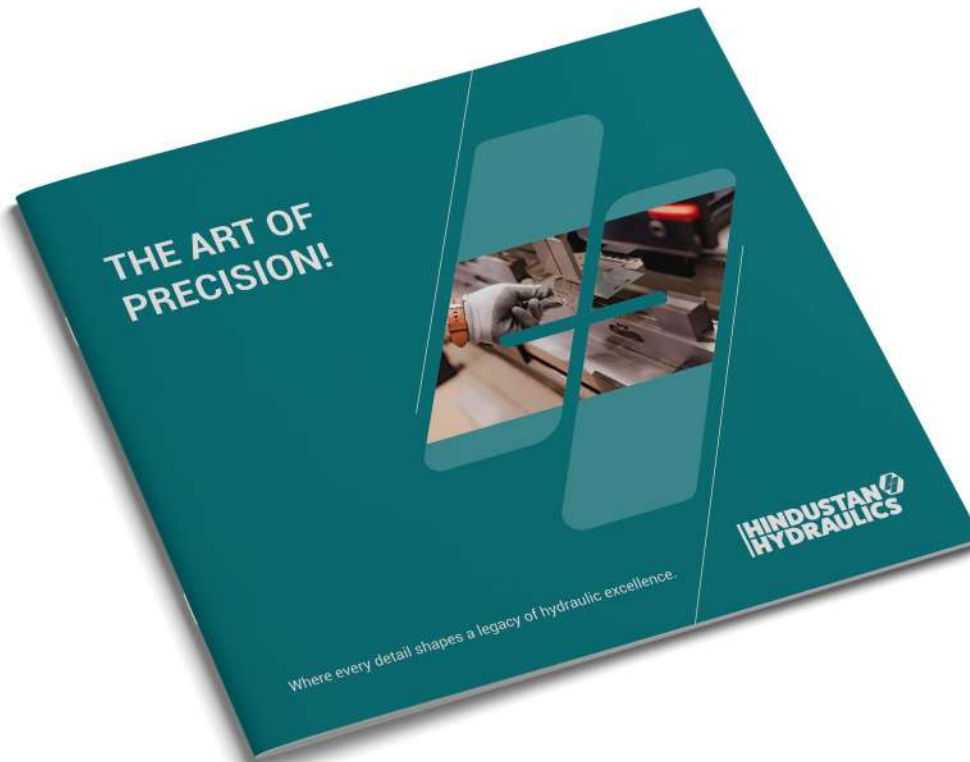
EID MUBARAK

www.hindustanhydraulics.com



Web landing Page





“
Details are the
building blocks of
our hydraulic heritage
”



From the Directors Desk

Message to the market
Shri M. V. Narayana Murthy, by Hindustan Hydraulics & Gear Plant Division as a Director and Chairman, is pleased to share...

At Hindustan Hydraulics everything starts with passion to create...
The passion for innovation, the passion for excellence, the passion...
the passion for technology and modern approach towards...
manufacturing, not to the pursuit and uncompromising...
quest for cost-effective, adapted, designed and manufactured...
sheet metal forming machines.

Innovating Possibilities

Our Journey

Established in 1953, Hindustan Hydraulics (the old BHPL) has been dedicated to providing the finest quality...
and world-class sheet metal forming machines, serving the best in our national markets. Our portfolio includes a variety of...
hydraulic presses such as turning presses, sheet draw presses, forging presses, and other rolling presses. We...
manufacture international sub-products, including TOS Cam-follower for presses and HOECHWALD Germany for...
rolling equipment for India Hydraulics, and have established a strong global presence.

BHPL works to provide some of the most advanced and innovative manufacturing. Operating under the aegis of IISRL...
is, an ISO 9001:2015 certified manufacturing unit staffed by highly qualified engineers and specialists in design, manufacturing, quality...
control, sales and marketing.



UNPARALLELED EXCELLENCE
The new standards, we've mastered in our work, shaping from their control, but a leading figure. Our CNC Press Blanks, CNC...
Flare Lamin and NC Drawing machines are not just tools, they are the instruments of precision, power, and planning...
open.


UNMATCHED EFFICIENCY
We were the first in India to introduce a 13-ton CNC Hydraulic Press Brake, the first to purchase the Tackler CNC...
Hydraulic Press Brake, the first to install an 800-ton CNC Press Brake, and the first to commission a 2200-ton Drawing...
machine. Hindustan Hydraulics is committed to the highest standards in our industry, and we're just getting started.

UNMATCHED EXPERIENCE
Commitment isn't just for products, it's for the people who rely on them. We've built a PNH INDIA NETWORK, uniting...
together reliability, integrity, transparency, sustainability, ethics, and safety.

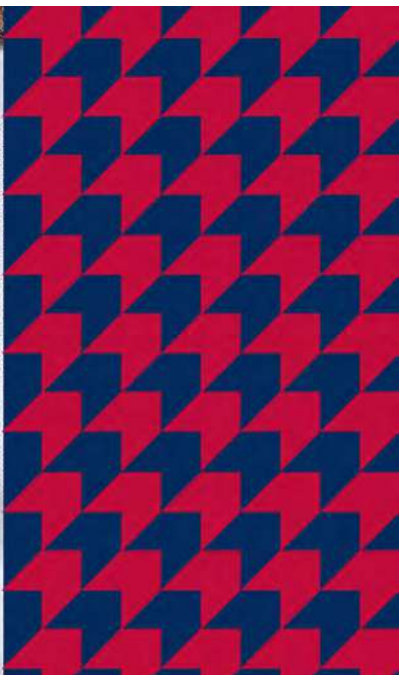


WORKS

Education



PRIDE WORLD SCHOOL





PRIDE WORLD SCHOOL

Lorem Ipsum is simply dummy text of the printing and typesetting industry. Lorem Ipsum has been the industry's standard dummy text ever since the 1500s, when an unknown printer took a galley of type and scrambled it to make a type specimen book. It has survived not only five centuries, but also the leap into electronic typesetting, remaining essentially unchanged.

Lorem Ipsum is simply dummy text of the printing and typesetting industry. Lorem Ipsum has been the industry's standard dummy text ever since the 1500s, when an unknown printer took a galley of type and scrambled it to make a type specimen book. It has survived not only five centuries, but also the leap into electronic typesetting, remaining essentially unchanged.

Lorem Ipsum is simply dummy text of the printing and typesetting industry. Lorem Ipsum has been the industry's standard dummy text ever since the 1500s, when an unknown printer took a galley of type and scrambled it to make a type specimen book. It has survived not only five centuries, but also the leap into electronic typesetting, remaining essentially unchanged.

john



PRIDE WORLD SCHOOL

016 0058 10
YOURMAIL@MAIL.COM
YOUR ADDRESS HERE

Sanjeev Shrivastava
Director

Gutab Stud Farm, 14-B
Gadairpur DLF Farms
New Delhi 110030, India
T: +918880004111
F: +911166173277
contact@vermafamilioffice.com



PRIDE WORLD SCHOOL

pws.edu

Little Wonders

Prepare to be Amazed...



Calling all
Curious Minds
in Bhubaneswar



Brace Yourself, Bhubaneswar!

The School of Tomorrow
is Right Around the Corner



Pre-Nursery to Class 5
with Special Daycare Facilities.



Session 2025-26
ADMISSIONS
OPEN

274, Rudrapur, Adjacent to National Highway 16,
Bhubaneswar, India 752101

 **1800-5711-786**
www.prideworldschool.org

pws.edu



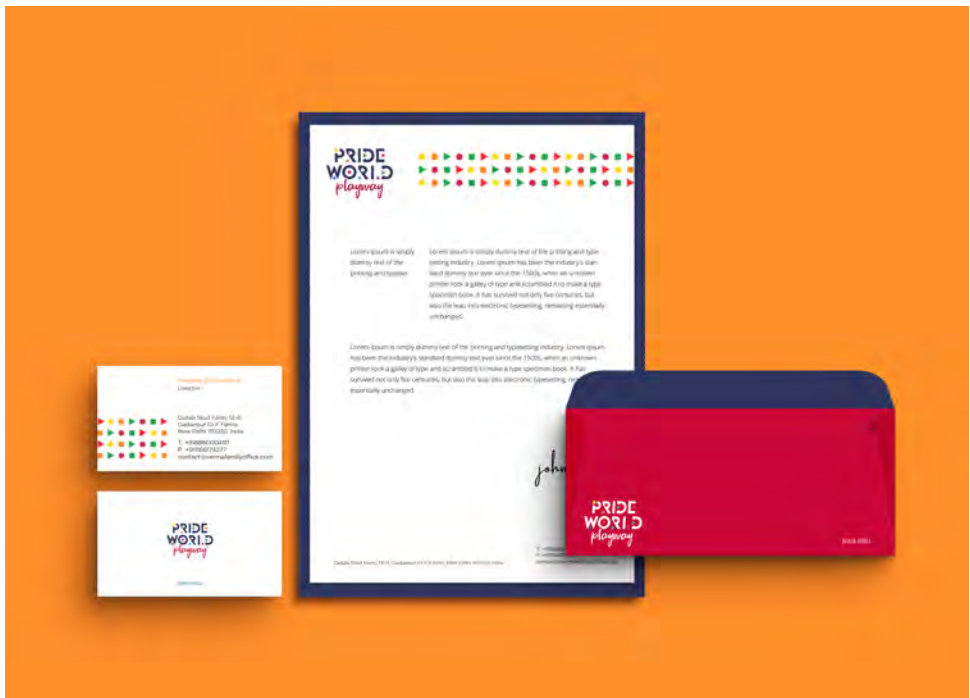
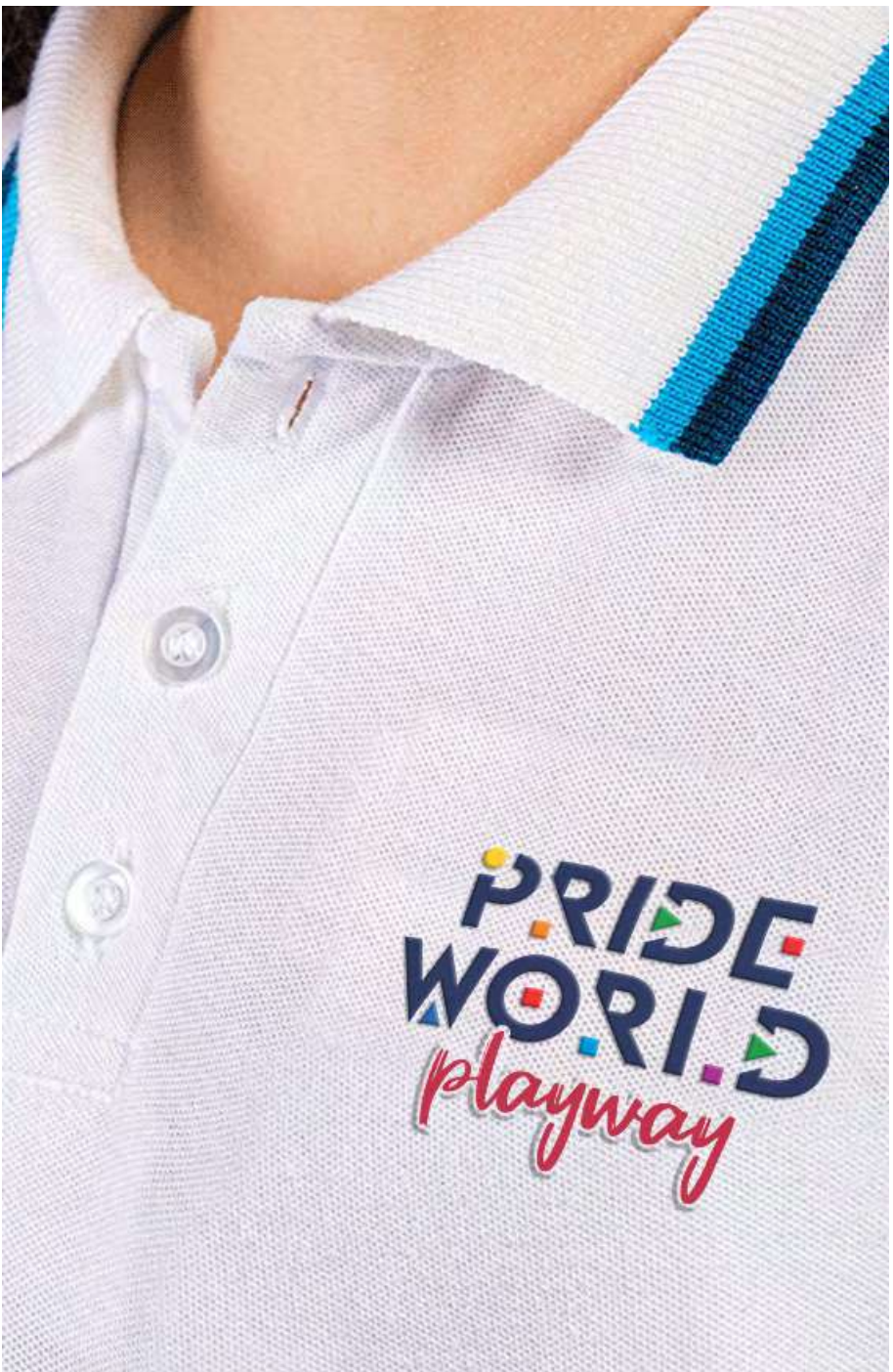
Empowering Minds, Igniting Passion!



**PRIDE WORLD
SCHOOL**

PRIDE
WORLD
playway

BHUBANESWAR



**PRIDE™
WORLD**
playway
BHUBANESWAR

Celebrate their Sparkling
Today for A Brighter Tomorrow.

**HAPPY
Diwali**

www.pwsedu.org

**PRIDE™
WORLD**
playway
BHUBANESWAR

Cultivating Values of
**EMPATHY,
INTEGRITY &
EXCELLENCE!**

www.pwsedu.org

**PRIDE™
WORLD**
playway
BHUBANESWAR

**LEARN.
DARE.
EMERGE
VICTORIOUS!**

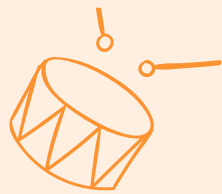
www.pwsedu.org

**PRIDE™
WORLD**
playway
BHUBANESWAR

**NURTURING CURIOSITY &
ENCOURAGING CREATIVITY**

www.pwsedu.org

The
C U I D L ETM
House





As **Bright & Colourful**
As Their Hearts!

Soft play Area for Recreation



THE CUDDLE HOUSE

presents

KINGS
DAY OUT

To Celebrate **Fatherhood**

On 17th June, 2023
11 am onwards



GRAND TREAT FOR DADS

Adventure Sports • DIY Father's Day activity hampers
Firefree cooking station • Photo-booth • Tatoo & many more...

For details, Call:
9311883841
8448843844



Welcome
BACK LEARNERS!



ADMISSIONS OPEN!

For Session 2023-24

FIRST SCHOOL IS AS SPECIAL
AS THEIR **FIRST SMILE**

CHOOSE FIRST!



FIRST PRE SCHOOL IN
FARIDABAD AFFILIATED TO



INTERNATIONAL EARLY YEARS CURRICULUM

"Skillful experiential holistic learning harness children's natural curiosity."



ADMISSIONS OPEN!
For Session 2023-24

FIRST SCHOOL IS AS SPECIAL
AS THEIR *FIRST WORD*

**CHOOSE
FIRST!**

FIRST PRE SCHOOL IN
FARIDABAD AFFILIATED TO

ieyc

INTERNATIONAL EARLY YEARS CURRICULUM

"Children should be supported to learn
and develop at their own unique pace."



Thank You For Always Being The Best!

HAPPY
Father's Day



Your Appreciation, Our Motivation!

**THANK YOU
PARENTS**

For making the Grand Finale of

AQUATICO

SUMMER CAMP 2023

A Massive Success!



'Gurus' teachings enable us to overcome
obstacles in life and discover infinite possibilities.'



May this divine day brings
immense joy, harmony & tranquility.

EID
MUBARAK



NURTURING HEALTHFULNESS
FOR A FLEXIBLE LIFE!



WORKS

Real Estate



...to Fallujah
...Iraq's stance



OMEGA
CONNAUGHT
PLACE



EXPERIENCE
FEARLESS
ENTERTAINMENT

India's First and Largest
INDOOR THEME PARK



Flip to get more...



DIS
MEMBER
SOCIETY
FREE

OMAXE
Creating Dreams into Reality

DelhiTimes



BACK BEAT
I want to move
beyond the
regional actor
in Bollywood
tag. Page 4

BUILD YOUR OWN LEGACY
PRESENTING



2BHK | 3BHK | 4BHK | PENTHOUSES

AMENITIES

- Pickle Ball Court | Squash Court | Club House
- Billiards Lounge | Swimming Pool | Amphitheatre Plaza
- Fully Equipped Fitness Gym | Yoga and Meditation Room
- and many more...



OMAXE
Royal Residency
Prestige

4 PART OF
OMAXE Royal Residency
Prestige Road, Lodhrani

W51 Omaxe Sales Office, Royal Residency, Pathrowal Road, Lodhrani
W52 Omaxe Sales Office, Royal Residency, Pathrowal Road, Lodhrani
W53 Omaxe Sales Office, Royal Residency, Pathrowal Road, Lodhrani
W54 Omaxe Sales Office, Royal Residency, Pathrowal Road, Lodhrani

9999 998 883
www.omaxe.com



INSPIRE THE NEXT



Setting benchmarks in the Largest Choice of Product Mix -

Hi-Street Commercials, Malls, Office Spaces, Corporate Business Towers,
Retail Spaces, SCDs, Integrated Townships, Group Housing,
Residential High Rises, Luxury Villas & Apartments, Penthouses,
Club Houses, Hospitality and Plots

32 Years of Establishment -

Spreading Values
& Building Trust

5,40,000 Happy Customers -

More than the individual
population of 52 countries

127.33 Million Sq. Ft. Delivered -

A future built on the strong foundation of trust

8 States 27 Cities

Growing Presence, A National Pride



www.omaxe.com

RERA No.:
HRERA-PKL-FBD-216-2020
Dated: 09.10.2020

EXPLORE THE BIG AT...



Sector-79, Faridabad

Many Worlds in One World!





www.omaxe.com



World Trip on a short trip...



Sector-79, Faridabad

Enter the Many Worlds in One World
at India's Biggest
Super Commercial & Mega Tourist Destination!

RERA No.: HRERA-PKL-FBD-216-2020 | Dated: 09.10.2020



**Your
Ambitions
To Grow**

www.omaxe.com



**Happiness
Everyday**

www.omaxe.com

**WORLD
STREET**



**HOT
PLACE**

TO CHILL!

Celebrate Life
AT FARIDABAD'S
MOST FAVOURITE HOTSPOT!

**WORLD
STREET**



**HOT
PLACE**

TO CHILL!

Celebrate Life
AT FARIDABAD'S
MOST FAVOURITE HOTSPOT!

There is a Star of hope
in each one of us!

May that star shine brighter than
ever with joys of celebration!

Merry
Christmas



anger
greed
injustice
dishonesty
pride
envy
hatred
revenge
arrogance
ego

MAY THE GOOD & THE PROGRESSIVE ALWAYS THRIVE!

Happy
Dussehra



ASSOTECH

NEXT GENERATION SPACES

ASSOTECH
NEW GENERATION SPACES

Humne **JEETA**
RANCHI ka dil!

ASSOTECH HILLS RANCHI
H.O.P.A.P.D.I.
RANCHI'S FINEST, FULLY INTEGRATED TOWNSHIP



FESTIVE BONANZA
NAVRATRI, DIWALI & CHHATH PUJA

OFFER VALID FROM 05TH OCT. TO 30TH NOV. 2024

Enjoy Gifts
ON EVERY INVESTMENT

3 BHK Flat

3 Bedrooms, Drawing Room,
Dining Room, 3 Toilets, 2 Balconies

TOTAL AREA - 1470 SQ. FT.

Choose the one that suits you

MODULAR KITCHEN
OR
3 A/C WITH REFRIGERATOR

Starting **₹77.20 लाख**

2.5 BHK Flat

2 Bedrooms, Drawing Room, Dining Room,
Study Room, 2 Toilets, Balcony

TOTAL AREA - 975 SQ. FT.

Choose the one that suits you

MODULAR KITCHEN
OR
3 A/C WITH REFRIGERATOR

Starting **₹55.20 लाख**

ASSOTECH HILLS RANCHI

FOR MORE DETAILS:

Inside Out,
THE RISE IS BREATHTAKING



Presenting...
LIMITED EDITION LUXURY APARTMENTS.



4.5 BHK | ₹3.00 Cr.
332 sq. mtr. | 3375 sq. ft.

3.5 BHK | ₹2.30 Cr.
259 sq. mtr. | 2795 sq. ft.

TALL.
ICONIC.
LUXURIOUS.

#OwnTheThrone

For an exclusive & indulging experience, call our dedicated Luxury Relationship Manager at **+91 8505 882 882 NOW!**

DRERA No. : MR/19/2021/00585 | This project is approved by Bhubaneswar Municipal Corporation, Bhubaneswar vide letter No. 71780/ Date: 20-09-2021

Bhubaneswar: The undersigned has been duly licensed by the Registrar of Real Estate Brokers, Bhubaneswar, Odisha, India, to act as a real estate broker. The undersigned hereby certifies that the information furnished by him in this advertisement is true and correct to the best of his knowledge and belief. He is not responsible for the performance of the project. The undersigned hereby certifies that the information furnished by him in this advertisement is true and correct to the best of his knowledge and belief. He is not responsible for the performance of the project. The undersigned hereby certifies that the information furnished by him in this advertisement is true and correct to the best of his knowledge and belief. He is not responsible for the performance of the project.

The Rising Landmark
of Luxury & Exclusivity,
bigger than the biggest in Odisha,
at 123 mtr. across 33 floors,
& international style elevation.

Ultra luxury select apartments
with upscale neighbourhood

37000 sq.ft. plush club house
with 5-Star facilities

Aerial deck equivalent the size of a 2BHK

Grand double height entrance lounge
with high-speed elevators

Climate controlled air conditioned apts.
with premium wardrobe & modular kitchen

Exquisitely designed landscape & features



Assotech Pride -
A City In Making,
thoughtfully planned, sprawling
across 16 acres...& more

- Vibrant community, 35,000 sq.ft. central club house
- Multi-sports court with day night facilities for tennis court, basketball court, badminton, cricket & mini soccer
- Relaxing & rejuvenating landscaped design & day rich amenities with ample greenery
- Kids play area & swim gym
- Direct access to Bhubaneswar - Cuttack National Highway-16 & close proximity to City Centre, Biju Patnaik Int. Airport, Infocity etc.
- Zero garbage disposal, recycling of treated water & solar lights
- Construction in full swing with the ever-evolving MIVANT™ technology

For an exclusive & indulging experience, call our dedicated Luxury Relationship Manager at **+91 8505 882 882 NOW!**

ASSOTECH LEGACY - BUILDING TO BELONG

34 YEARS OF DELIVERING HOMES & HAPPINESS & 15 YEARS OF GROWING LEGACY IN ODISHA
• Over 45+ Projects Delivered • Presence in 6 States • 40,000+ Units Delivered

LITTLE CHAMPS TO SUPER CHAMPS

The **GAME PLAN**,
Starts Here!



LAUNCHING NOW,
Towers B5 & C2, 1st Avenue
at



A city in the making on Bhubaneswar-Cuttack 6 Lane Expressway

THE BUILD. THE PLACE. THE GAME PLAN!



Home is where your little stars can work on fine-tuning their game. At Assotech Pride, we go a step forward to build on the elements that make your heart beat faster. Because understanding your heart's passion can we build, the arena to test them first.

Thoughtfully located on 6-Lane Bhubaneswar-Cuttack Expressway close to India's sports capital city of Bhubaneswar, Assotech Pride, 1st Avenue is the home where your little stars can work on fine-tuning their game. Committed to delivering a smart and wholesome lifestyle experience, Assotech Pride remains in top gear to help build your little champ's passions with the finest of amenities pitched against a green. They-rich experience.

Upcoming Club House - One of the Largest in Odisha
Ultra Modern Fast Paced Construction with MIVAN Technology
Designed on Optimization of Natural Light & Wind

Fully Integrated, Peace-of-mind Features

- 7.5m Wide Internal Road
- Senior Citizens' Hangout
- Open Gym
- Dedicated Sports Court
- Separate Kids' Adult Fridge
- Kids' Play Area
- Spa & Jacuzzi
- Plantation of 3000+ Trees, 10000 shrubs
- Rain Water Harvesting
- Cafe & Library
- Zero Garbage Dispose
- Solar Lights
- Podium Parking
- STP - Sewerage Treatment Plant
- 24 x 7 Security Surveillance
- Landscaped Gardens & Pergola Staking

34 YEARS OF DELIVERING HOMES & HAPPINESS & 15 YEARS OF GROWING LEGACY IN ODISHA
• Over 45+ Projects Delivered • Presence in 6 States • 40,000+ Units Delivered

Assotech Bhubaneswar Office: Assotech Pride, Plot No. 27A, Badrapur, Adjacent to NH-14, Bhubaneswar - 751011
Assotech Corporate Office: H-127, Sector-62, Noida | www.assotechlimited.com



9999 999 999







PARAMOUNT

GUIDED BY TOMORROW

WELCOME TO A
 WORLD-CLASS LIVING



READY-TO-MOVE-IN
VILLAS

(Value Addition)

Launching Hi-End International Level Streets

Master planning by Subania International, Singapore | Lush green linear landscape | Operational club with gym, sauna and steam | Wave effect swimming pool | Mini train, gazebo, artificial lake & boating | Futuristic homes with optical fiber network

PARAMOUNT GROUP OF COMPANIES

Corporate Office: H-123, Sector-63, Noida-201305 (UP). Website: www.paramountgroup.co.in



TOWNSHIPS • COMMERCIAL COMPLEXES • RESIDENTIAL COMPLEXES • VILLAS • IT PARKS • MALLS • HOTELS

PARAMOUNT VILLAS PVT. LTD. ADDRESS: UNIT NO. 9A/7/2013/04/5/05/06/07/08/09/10/11/12/13/14/15/16/17/18/19/20/21/22/23/24/25/26/27/28/29/30/31/32/33/34/35/36/37/38/39/40/41/42/43/44/45/46/47/48/49/50/51/52/53/54/55/56/57/58/59/60/61/62/63/64/65/66/67/68/69/70/71/72/73/74/75/76/77/78/79/80/81/82/83/84/85/86/87/88/89/90/91/92/93/94/95/96/97/98/99/100/101/102/103/104/105/106/107/108/109/110/111/112/113/114/115/116/117/118/119/120/121/122/123/124/125/126/127/128/129/130/131/132/133/134/135/136/137/138/139/140/141/142/143/144/145/146/147/148/149/150/151/152/153/154/155/156/157/158/159/160/161/162/163/164/165/166/167/168/169/170/171/172/173/174/175/176/177/178/179/180/181/182/183/184/185/186/187/188/189/190/191/192/193/194/195/196/197/198/199/200/201/202/203/204/205/206/207/208/209/210/211/212/213/214/215/216/217/218/219/220/221/222/223/224/225/226/227/228/229/230/231/232/233/234/235/236/237/238/239/240/241/242/243/244/245/246/247/248/249/250/251/252/253/254/255/256/257/258/259/260/261/262/263/264/265/266/267/268/269/270/271/272/273/274/275/276/277/278/279/280/281/282/283/284/285/286/287/288/289/290/291/292/293/294/295/296/297/298/299/300/301/302/303/304/305/306/307/308/309/310/311/312/313/314/315/316/317/318/319/320/321/322/323/324/325/326/327/328/329/330/331/332/333/334/335/336/337/338/339/340/341/342/343/344/345/346/347/348/349/350/351/352/353/354/355/356/357/358/359/360/361/362/363/364/365/366/367/368/369/370/371/372/373/374/375/376/377/378/379/380/381/382/383/384/385/386/387/388/389/390/391/392/393/394/395/396/397/398/399/400/401/402/403/404/405/406/407/408/409/410/411/412/413/414/415/416/417/418/419/420/421/422/423/424/425/426/427/428/429/430/431/432/433/434/435/436/437/438/439/440/441/442/443/444/445/446/447/448/449/450/451/452/453/454/455/456/457/458/459/460/461/462/463/464/465/466/467/468/469/470/471/472/473/474/475/476/477/478/479/480/481/482/483/484/485/486/487/488/489/490/491/492/493/494/495/496/497/498/499/500/501/502/503/504/505/506/507/508/509/510/511/512/513/514/515/516/517/518/519/520/521/522/523/524/525/526/527/528/529/530/531/532/533/534/535/536/537/538/539/540/541/542/543/544/545/546/547/548/549/550/551/552/553/554/555/556/557/558/559/560/561/562/563/564/565/566/567/568/569/570/571/572/573/574/575/576/577/578/579/580/581/582/583/584/585/586/587/588/589/590/591/592/593/594/595/596/597/598/599/600/601/602/603/604/605/606/607/608/609/610/611/612/613/614/615/616/617/618/619/620/621/622/623/624/625/626/627/628/629/630/631/632/633/634/635/636/637/638/639/640/641/642/643/644/645/646/647/648/649/650/651/652/653/654/655/656/657/658/659/660/661/662/663/664/665/666/667/668/669/670/671/672/673/674/675/676/677/678/679/680/681/682/683/684/685/686/687/688/689/690/691/692/693/694/695/696/697/698/699/700/701/702/703/704/705/706/707/708/709/710/711/712/713/714/715/716/717/718/719/720/721/722/723/724/725/726/727/728/729/730/731/732/733/734/735/736/737/738/739/740/741/742/743/744/745/746/747/748/749/750/751/752/753/754/755/756/757/758/759/760/761/762/763/764/765/766/767/768/769/770/771/772/773/774/775/776/777/778/779/780/781/782/783/784/785/786/787/788/789/790/791/792/793/794/795/796/797/798/799/800/801/802/803/804/805/806/807/808/809/810/811/812/813/814/815/816/817/818/819/820/821/822/823/824/825/826/827/828/829/830/831/832/833/834/835/836/837/838/839/840/841/842/843/844/845/846/847/848/849/850/851/852/853/854/855/856/857/858/859/860/861/862/863/864/865/866/867/868/869/870/871/872/873/874/875/876/877/878/879/880/881/882/883/884/885/886/887/888/889/890/891/892/893/894/895/896/897/898/899/900/901/902/903/904/905/906/907/908/909/910/911/912/913/914/915/916/917/918/919/920/921/922/923/924/925/926/927/928/929/930/931/932/933/934/935/936/937/938/939/940/941/942/943/944/945/946/947/948/949/950/951/952/953/954/955/956/957/958/959/960/961/962/963/964/965/966/967/968/969/970/971/972/973/974/975/976/977/978/979/980/981/982/983/984/985/986/987/988/989/990/991/992/993/994/995/996/997/998/999/1000



An Elite Lifestyle, profound with Amenities!

READY-TO
MOVE-IN
VILLAS

950 Families Residing

World Class Features

- Master planning by Surbana International, Singapore • Toy train, artificial lake & boating • Jogging track with gazebo • Lush green linear landscape • Operational club with gym, sauna, steam & jacuzzi • More effect swimming pool with LED screen • Quick Reaction Task Team • Basketball & Tennis Court • Skating Rink • Wide spacious roundabouts



Price starts **₹81 Lac**

GET MONETARY BENEFITS UPTO
₹45,000 / MONTH

Call: 83760 55555

PARAMOUNT GROUP OF COMPANIES: Corporate Office: H-103, Sector 63, Noida-201306 (UP) | Website: www.paramountgroup.co.in This project is financed by: L&T Finance Limited.

90 Acres Of Kingdom
WITH A LUXURY VILLA
AT THE PRICE OF AN APARTMENT

PARAMOUNT
golfforesté

READY-TO-MOVE-IN VILLAS
opp. zeta sector, greater noida



*An
Extension of...*





adore
PRIMA-II
LIVE LIFE KING SIZE
Sector 72-73, Faridabad



adore



PRIDE LEGACY EXCLUSIVITY



THE
SELECT
PREMIA

Sector 76, Faridabad

RERA: HRERA-PKL-FDD-584-2024

THE ADDRESS FOR GENERATIONS

9654 86 86 86



PRESENTING
PANCHSHEEL
pebbles
2/3 BHK, VAISHALI



The pleasure for life

Life without pleasure is just like sluggish water,
a pebble dropped into it can create ripples of joy.



Location that you dream for

- 5 mins. drive from Vaishali Metro Station • Shopping Complexes in vicinity
- Healthcare, Educational Institutions & Hotels nearby • 15 mins. drive to Delhi
- 5 mins drive to ISBT, Anand Vihar

WORKS

Fashion



SMILZO™

FASHION SHAPEWEAR

M: + 91 971116226, Email : sales@smilzo.in

Visit us on   /smilzofs

Ayaki
Fashionably Premium

an affair
with premium cosiness

Super-Premium Thermal
made from
Japanese Technology

Premium Comfort
Extra Stretchable
Feather Weight
Self Heat Generation
Maximum Heat Retention

Ayaki

COZY | STYLISH | PREMIUM

Feather Weight with Xtra Warmth

THINNEST YET WARMEST

Ayaki is made from Miyabi yarns. With its advanced technology for fabric development, it makes thermals thinnest, warmest and lightest. Miyabi yarns brought revolution in thermal technology and Ayaki is the result – The thinnest yet warmest thermals.

Thermals made from
Japanese technology

- HEAT GENERATION
- HEAT RETENTION
- STRETCHABLE COMFORT
- NON DEFORMING
- SOFT TEXTURE
- MOISTURE WICKING
- ANTI PILLING

AVAILABLE IN DIFFERENT COLOURS ■ Mysterious Black ■ Silver Grey □ Dove Off-White

Mktd. in India by:



Bodycare International Ltd.
WE ARE THE FUTURE

Email: bodycare@bodycareapparel.com | Website: www.bodycareapparel.com

 **Bodycare**
INSIDER
cozy soft thermals



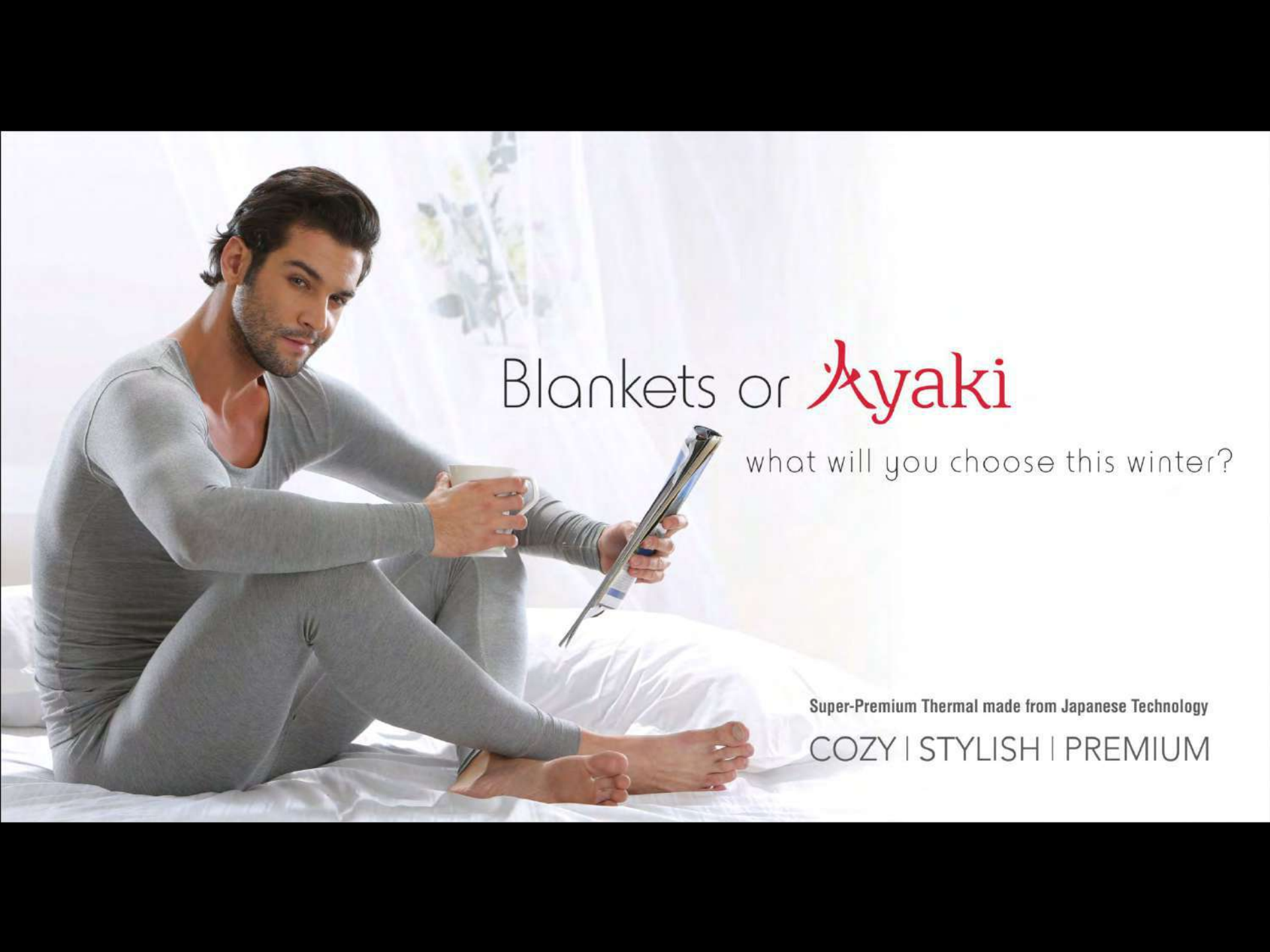
**INTELLIGENTLY
DESIGNED**

- Thermal for Xtra Comfort
- Premium Fabric for Insulation
- Superior Flexibility
- Perfect Fit
- Light Weight
- Crafted with Perfection

Mkt'd by:

Bodycare International Ltd.
WE ARE THE FUTURE

Available in: Full Sleeve, Half Sleeve, Lower,
Kids Lower & Kids Full Sleeve,
Grey and White Colour

A man with dark hair and a beard, wearing a grey long-sleeved thermal top and matching leggings, is sitting on a bed with white linens. He is holding a white mug in his right hand and a tablet computer in his left. He is looking towards the camera with a slight smile. The background is a bright, airy room with white curtains and a vase of flowers on a table.

Blankets or **Ayaki**

what will you choose this winter?

Super-Premium Thermal made from Japanese Technology

COZY | STYLISH | PREMIUM



EXPRESSION
» OF STYLE & WARMTH «

DYCA
Defines Your Class Always

PREMIUM PRICELESS THERMALS



Super
Premium
Fabric



Super
Stretchable



Super
Flexibility



Super
Comfort



Super
Designs



Super
Light

Cotton
POLYFILL
Cotton

Special Silicon
Softness

Made in India by



Bodycare International Ltd.
EST. 1997



Get Your **GAME** ON!



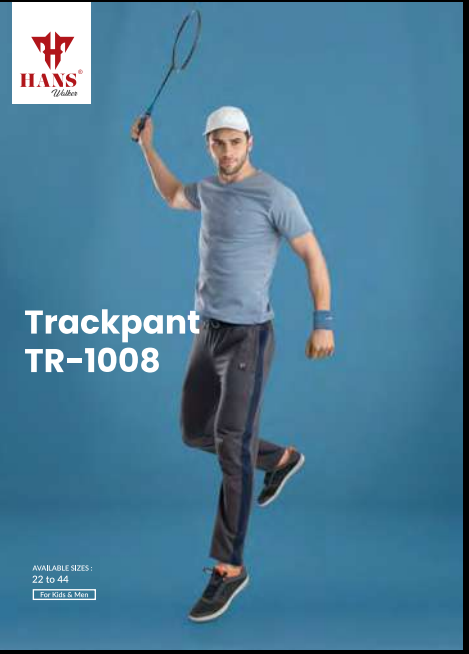
NEW COLLECTIONS

CATALOGUE
SUMMER 2022



Sports Lycra
Track Pant

AVAILABLE SIZES:
32 to 44
For Kids & Men



Trackpant
TR-1008

AVAILABLE SIZES:
22 to 44
For Kids & Men



Athleisure
SHORTS



NS 3 SHORTS SPORTS

AVAILABLE SIZES

M L XL XXL 3XL



QUEENS
Printed
Trackpant



AVAILABLE SIZES :
26 to 3XL
(for girls & women)



KIDS 1005
TRACKPANT



AVAILABLE SIZES :
26 to 36

WORKS

Packaging



 **Bodycare**
INSIDER
cozy soft thermals

 **Bodycare**
INSIDER
cozy soft thermals

For
MEN

Long Sleeve Vest





WORKS

Catalogue

LEANEXZO

Elegantly Designed Figure Shaper
BODY SUIT, # SB-012

- All season essential innerwear
- Gives charming silhouette figure
- A hook-on utility at the crotch for convenience
- Synthetic free Shoulder straps made from MICROMODAL®
- Slims and soothes waist, tummy and lower back
- Breathable and repels moisture.
- Super flexible fabric that offers higher shaping level with comfort.
- Essential for workouts
- Functional and Decorative stitches with world class thread for an elegant look



LEANEXZO

Elegantly Designed Figure Shaper
BODY SUIT, # SB-011

- All season essential innerwear
- Bones for curvaceous sides
- Gives charming silhouette figure
- A hook-on utility at the crotch for convenience
- Synthetic free Shoulder straps made from MICROMODAL®
- Slims and soothes waist, tummy and lower back
- Breathable and repels moisture.
- Super flexible fabric that offers higher shaping level with comfort.
- Essential for workouts
- Functional and Decorative stitches with world class thread for an elegant look



SMILZO SIZE	S	M	L	XL	XXL	XXXL	XXXXL
YOUR WAIST	30"-32 1/2"	31"-33 1/2"	34"-35 1/2"	37"-38 1/2"	40"-41 1/2"	42"-44 1/2"	46"-47 1/2"
YOUR HIP	38.5"-40"	41.5"-43.5"	44.5"-46"	47.5"-49"	50.5"-52"	53.5"-55"	56.5"-58"



100% MICROMODAL, 50% ELASTANE, 50% NYLON
WASHABLE, DRY CLEANABLE, DO NOT BLEACH
DO NOT IRON, DO NOT DRY CLEAN, DO NOT TUMBLE DRY
DO NOT USE HARSH DETERGENTS

SMILZO
www.smilzo.in

Made & Mkt. by
SST Shopping Systems India Pvt. Ltd.

G-29 - 8/65 - Janak Puri, New Delhi, India. Tel: +91 11 25630735, 25639345

Customer Care email: care@smilzo.in

www.smilzo.in

Visit us on [Facebook](#) / [Orkut](#)



LEANEXZO

SMILZO™
FASHION SHAPEWEAR

All Season Essential Innerwear



70% MICRO MODAL, 18% ELASTANE, 12% NYLON
 MACHINE WASH GENTLE AT TEMPERATURE INDICATED.
 ONLY NON-CHLORINE BLEACH IF NEEDED. TUMBLE DRY AT LOW HEAT.
 DO NOT IRON AND DO NOT DRY CLEAN.

SMILZO
 FASHION SHAPESWEAR

Mkt. & Mktg. by
SS Shaping Systems India Pvt. Ltd.
 C-2B - 88B Janak Puri, New Delhi, India.
 Tel: +91 11 25638736, 25639345
 Customer Care email: care@smilzo.in

www.smilzo.in

Visit us on /smilzofit



SMILZO
 FASHION SHAPESWEAR

LEANEXZO

Body Suite
 Style # SBT - 001

LEANEXZO

Body Suite
 Style # SBT - 001

Features

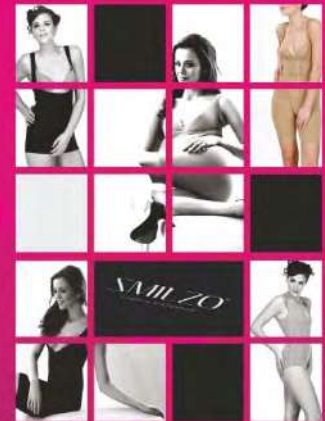
- All season essential innerwear
- Gives charming silhouette figure
- A aperture at the crotch for convenience
- Synthetic free Shoulder straps made from MICROMODAL®
- Slims and soothes waist, tummy, thighs and lower back
- Breathable and repels moisture.
- Super flexible fabric that offers higher shaping level with comfort.
- Essential for workouts
- Functional and Decorative stitches with world class thread for an elegant look



Wondrous MicroModal

Super Soft Premium Quality Fabric With Natural Yarn

The low fiber rigidity and the special cross-section of MICROMODAL® transform the fiber into an expert for natural softness. The high softness factor and naturalness are what make SMILZO™ the ideal choice for soft, smooth and figure-hugging Garment made from world class premium quality Natural Yarn. Softness is expressed by the bending stiffness of textiles. This comprises the drape, hand, suppleness and creasing behavior. Excellent softness can be attained thanks to the low fiber rigidity of MICROMODAL®.



DYCA
DEFINES YOUR CLASS ALWAYS

Made in India by

Bodycare International Ltd.
WE ARE THE FUTURE

165, Functional Industrial Estate, Patparganj, Delhi - 110092. Email: bodycare@bodycareapparel.com, Customer Care Number : +91 11 42141466
 For Distribution Enquiry please call : 9511714591

DYCA
 Defines Your Class Always

EXPRESSION OF
 STYLE & WARMTH



**Cotton
 POLYFILL
 Cotton**

Special Silicon
 Softness

MEN'S THERMALS

PREMIUM PRICELESS
 THERMALS



D11
 ROUND NECK FULL SLEEVES
 Color: Off White
 Size (in cm): 80 - 110



D12
 LOWER
 Color: (GM)
 Size (in cm): 80 - 110



D13
 ROUND NECK FULL SLEEVES
 Color: Off White
 Size (in cm): 80 - 110



D12
 LOWER
 Color: (GM)
 Size (in cm): 80 - 110

Super Premium Fabric Super Stretchable Super Flexibility Super Comfort Super designs Super Light







WORKS

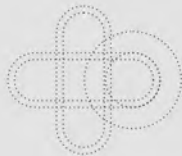
HealthCare



Infinity Care Hospital

A Multi-Specialty Hospital & Healthcare Facility

Logo Formation





**Infinity Care
Hospital**
A Unit of Saraswati Trust

A 150 Bedded Multi-Specialty
Hospital & Healthcare Facility.

Caring for Mental Health & Well-being!

Neurology & Neurosurgery Centre

Appropriate care plan, essential for the diagnosis & management of

- Epilepsy
- Cerebral Stroke
- Complex Neuromuscular Disorders
- Congenital Anomalies
- Trauma
- Tumors
- Vascular Disorders
- Brain or Spinal Infection
- Stroke
- Degenerative diseases of the Spine.



Use of Advanced & latest technology & most thorough programs, including :
diagnosis & surgical treatment



92, 93 Tagore Town (Panch Kosi Road), Orderly Bazaar,
Varanasi - 221002

www.infinitycarehospital.com

infinitycarehospital@gmail.com / info@infinitycarehospital.com

Book Appointment

83037 10017

83037 10006



**Infinity Care
Hospital**
A Unit of Saraswati Trust

A 150 Bedded Multi-Specialty
Hospital & Healthcare Facility.

When You Need, Immediate Attention!

CRITICAL & TRAUMA CARE



Fully equipped
CCU, ICU, SICU
managed by expert Interventionists.

- Specialist intensive care units
- Defibrillator (to restart the heart)
- Trauma injury (burns, road accidents etc.)
- Blood Infections (sepsis)
- Respirators /mechanical ventilator
- Cardiac monitors (heart rate, BP)
- Invasive BP monitoring
- Mechanical circulatory support (IABP)
- Emergency operation theatres
- Emergency tracheostomy
- IV drips
- Sedatives & Anesthetics (for severe pain)
- Acute coronary syndrome (heart attack),
Primary PCI, Pacemaker etc.



92, 93 Tagore Town (Panch Kosi Road), Orderly Bazaar,
Varanasi - 221002

www.infinitycarehospital.com

infinitycarehospital@gmail.com / info@infinitycarehospital.com

Book Appointment

83037 10017

83037 10006

Service, the heart of Healthcare!



92, 93 Tagore Town (Pinch Kosi Road), Ordery Bazaar, Varanasi - 221002
www.infinitycarehospital.com | +91 8303710017 / 8303710006
infinitycarehospital@gmail.com | info@infinitycarehospital.com

Emergency & Trauma Care Team
Fully-equipped Critical Care Centre (CCU, ICU, SICU) managed by expert Interventionists.

Life-saving cardiac interventions (Primary & Complex PCI)
Infinity Care Hospital provides Advanced Interventional & Non Invasive Cardiology Services.



Standalone Dialysis Unit
Standalone Quality Dialysis unit with Nephrology Consultation for patients who require immediate dialysis.



Pathology/ Laboratory Services

Our labs are incorporated with the latest interfacing of the technical devices, equipped with fully automated medical equipment.



Super Speciality Doctors for Critical Care Management

24 Hours Services

Modular Operation Theaters

Infinity Care Hospital Operation Theaters are equipped with modern medio-technical, surgical and monitoring facilities that ensure the safety of our patients.



Ambulance Services

Infinity Care Hospital ambulances are well furnished mobile ICU-on-Wheels, consisting of a critical care physician, a rescue nurse along with additional specialists with 24x7 communication access.



Diagnostic Radiology & Cardiology

Radio Diagnosis at Infinity Care Hospital are provided 24x7 with focus on radiation, ultrasound and magnetic resonance as diagnostic, therapeutic and research tools in medicinal practices - related to anatomy, pathology, physiology, and interventional procedures.



Pharmacy Services

Hospital pharmacy facilities are provided in-house at Infinity Care Hospital to manage the procurement, storage, preservation, packaging, sterilization, compounding, preparation, dispensing and distribution of medicine in the hospital.



**Infinity Care
Hospital**
A Unit of Saraswati Trust


A 150 BEDDED Multi-Specialty Hospital
& Healthcare Facility

www.infinitycarehospital.com

**हम ध्यान रखते हैं आपके
मानसिक स्वास्थ्य का**

Neurology & Neurosurgery Centre



 92, 93 Tagore Town (Panch Kosi Road),
Orderly Bazaar, Varanasi - 221002

 **8303710017 | 8303710006**



GOLD ETCHING

92, 93 Tagore Town (Panch Kosi Road),
Orderly Bazaar, Varanasi - 221002
+91 8303710017 | 8303710006

infinitycarehospital@gmail.com
info@infinitycarehospital.com
www.infinitycarehospital.com

Dr. Abhishek Vikram Singh

M.D & D.M. (Intervention Cardiology)
Founder and Managing Director
+91 9899-593891

GOLD ETCHING

Business Card- MD



92, 93 Tagore Town (Panch Kosi Road), Orderly Bazaar, Varanasi - 221002 +91 8303710017 | 8303710006
www.infinitycarehospital.com | info@infinitycarehospital.com



Radha Krishnam
Sarkar
 Multispeciality Hospital

EMERGENCY में हम हैना



**24x7 Emergency Services
 & ICU Facility available**

www.sarkarhospitals.com

+91 93369 89455
Toll Free 18008910210

Radha Krishnam
Sarkar
 Multispeciality Hospital

**BETTER
 CARE.**



**FASTER
 RECOVERY**

All your healthcare needs under one roof

OUR SERVICES

- GENERAL MEDICINE DEPARTMENT
- EMERGENCY
- I.C.U / CARDIOLOGY
- GENERAL SURGERY
- ORTHOPEDIC SURGERY
- GYNECOLOGY DEPARTMENT
- N.I.C.U.
- PEDIATRIC DEPARTMENT
- GASTRO DEPARTMENT
- CARDIOLOGY DEPARTMENT
- NEUROLOGY DEPARTMENT
- PLASTIC SURGERY DEPARTMENT
- COSMETIC SURGERY DEPARTMENT
- E.N.T
- CANCER DEPARTMENT



Radha Krishnam Sarkar Multispeciality Hospital
 63 A, Krishna Nagar, Kanpur road, Lucknow, Pin Code - 226023

sarkarhospitals@gmail.com www.sarkarhospitals.com +91 93369 89455

**Toll Free
 18008910210**

sarkarhospitals@gmail.com
www.sarkarhospitals.com

24x7 Emergency Services
& ICU Facility available

Rodho Krishnam
Sarkar
Multispecialty Hospital

आपकी PULSE
को हम समझते हैं!



OUR SERVICES

- GENERAL MEDICINE DEPARTMENT
- EMERGENCY
- I.C.U./ CARDIOLOGY
- GENERAL SURGERY
- ORTHOPEDIC SURGERY
- GYNECOLOGY DEPARTMENT
- M.A.S.O.
- PEDIATRIC DEPARTMENT

- GASTRO DEPARTMENT
- CARDIOLOGY DEPARTMENT
- NEUROLOGY DEPARTMENT
- PLASTIC SURGERY DEPARTMENT
- COSMETIC SURGERY DEPARTMENT
- E.N.T
- CANCER DEPARTMENT

63 A, Krishna Nagar, Kanpur Road, Lucknow - 226023

+91 93369 89455
Toll Free 18008910210

WORKS

Sundry Creatives

Nearing 5 DECADES of Tech Inspirations

from life, for life!

The EFY Group's first magazine Electronics For You, launched almost five decades ago, along with its evolving medley of publications, continues to keep the electronics fraternity updated with the latest technology trends, smart innovations and information from across the globe.

Showcasing EFY Group's prowess at the DEFEXPO 18, remains the most perfect opportunity to highlight India's fast-paced emergence as one of the most eminent global player in the defence manufacturing arena.



EFY Group honoured to participate at



• Magazines • Web Portals • Annual Events • Directory • Book Titles • DIY Electronics Projects & Hobby Kits

Shinkansen Bullet Train's redesigned nose, a 50-foot-long steel kingfisher beak, solves noise-pollution levels, reduces power use and enables faster speeds!

Inspirations from life, for life!



The EFY Group, publishers of 'Electronics For You' Magazine, first published in 1969, is today the cauldron of prolific minds, committed to propelling informed technology decisions with its focused and future-rich technology content to make the world, a smarter world!

- Magazines • Web Portals • Annual Events • Directory
- Book Titles • DIY Electronics Projects & Hobby Kits



The Tech-Catalyst...

Propelling Informed Technology Decisions!

Former publishers of 'Electronics For You' Magazine first published in 1969, the EFY Group is today the cauldron of prolific minds, committed to propelling informed technology decision with its focused and future-rich technology content to make the world, a smarter world!

- Magazines • Web Portals • Annual Events • Directory • Book Titles • DIY Electronics Projects & Hobby Kits



Dear Esteemed Partners,

As the brilliance of a great morning lays the path ahead, I take this opportunity to unleash the much-awaited EFY supplement, the eStyle Magazine!

And now with EFY's 68% mindshare amongst India's tech fraternity (recent ELCINA-IMRB study), EFY further exemplifies its exclusive stance to engage tech community of India and beyond!

Conceived and thoughtfully designed as a window to the fast expanding world of technology, eStyle is an opportunity to experience technology in its most brilliant expression, encapsulated by the latest, real-time dynamics of changing tech-trends, innovations, inventions, dreams and ideas.

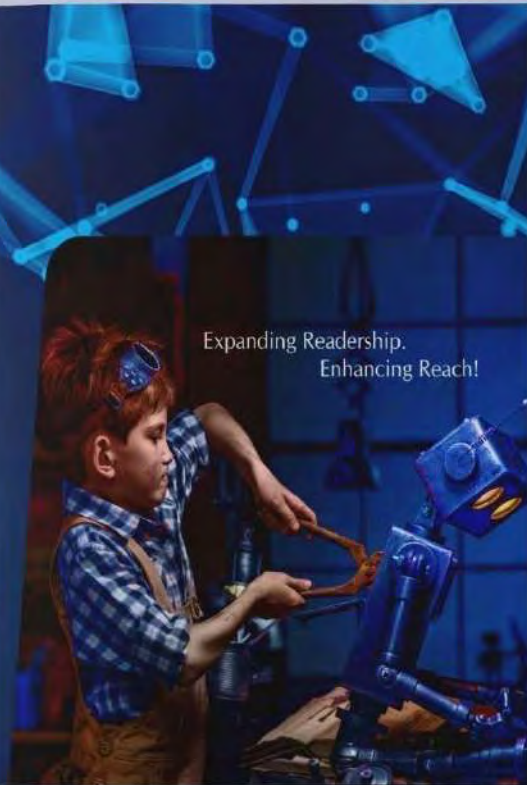
All poised to offer some of the most sought-after technology experience, eStyle is a refined tech extension, a supplement that boasts of 100% feel-good factor in the vast expanding genre of synchronized, future-prepared technology and beyond!

eStyle gives you the opportunity to expand, augment and grow your business prospect. A single-window to the fast-paced world of technology indulgence and the extensive benefits of marketing potential and tangible increase of subscriptions.

While you enjoy the complementary eStyle, packaged and wrapped thoughtfully by innovative ingredients, industries and subjects, may we subscribe you on board for an insatiable experience.

Thank you,

Sincerely,



Expanding Readership.
Enhancing Reach!



Emerging Tech Trends
Be Future Prepared, Today!

EFY GROUP
Technology and More

Come showcase your prowess
at India's Largest Techno Arena

INDIA
TECHNOLOGY
WEEK 01 & 02-JAN 2017

PRAGATI MAIDAN, NEW DELHI

Be a part of tomorrow, today!

For details, Call: 011- 99999999 | Email: info@itw.com | www.itw.com

EFYGROUP
Technology Drives Us

Come showcase your prowess
at India's Largest Techno Arena

INDIA
TECHNOLOGY
WEEK 01 & 02-JAN 2017

PRAGATI MAIDAN, NEW DELHI

Be a part of tomorrow, today!

For details, Call: 011- 99999999
Email: info@itw.com | www.itw.com

EFYGROUP
Technology Drives Us



EXPERIENCE TECHNOLOGY

INDIA TECH WEEK-2018

Join us in 3 days full of inspiration and education on User Experience, 12 speakers will provide insights into their work and offer ways to make us all better at what we do.

WHY ITW

- To 4th primary and tertiary, business leaders
- INDIA's first comprehensive Tech show '18
- INDIA's answer to the World's best technology

EVENT WILL START IN

109 days 07 hours 06 minutes 12 seconds

HIGHLIGHTS OF ITW 2018

Artificial Intelligence & Robotics	Internet of Things	Automotive Electronics	Mobiles & Smartphones	Entertainment	Green Tech
Healthcare	Investment in Technology	Investment in Technology	Virtual Reality & Augmented Reality	Laptops & Pads	
Software, Applications & Services	Wearables	Security	Start Ups	Government Initiatives	

EVENT SHOWCASE

CONSUMER ELECTRONICS SHOW	CONNECTED DEVICES AND PRODUCTS	SMART CONNECTIVITY
SMART CITIES	AUTOMOTIVE ELECTRONICS	INVESTORS AND FINANCIAL INSTITUTIONS

We couldn't make it without you!



Want to Exhibit at ITW 2018? Showcase your brand, launch your latest products and get business at the ultimate platform for innovation.

EXHIBIT NOW

BECOME A SPONSOR

"Learn how to take 3D X-ray connectivity applications to the next level with the latest hardware solutions in future of mobile devices in home, in cars and other settings, with leading manufacturers of mobile devices at ATW18. We are currently accepting exhibitors who want to be in the forefront of innovation in their industry. Contact us today to learn more."



INDIA TECH WEEK

TOWARDS HIGHER TQ!



WHAT'S TQ, TECHNOLOGY QUOTIENT?

TQ is not an Apt. Intelligent Quotient (IQ), Emotional Quotient (EQ) and now Technology Quotient (TQ). Technology quotient represents a person's ability to adapt to and integrate technology as compared to the statistical norm or average for their age, scales as 100.

We can understand the value of IQ and EQ in projecting the potential for a child's success. And while the perfect combination of IQ and EQ may be in question, book smarts and street smarts are always high on the wish list. But what about technology?

The ability for the student and the teacher to understand, embrace and assimilate technology will be a defining aspect of their lives as we speed into the future. And in many instances, this techno-ability will drive achievement and success. In the final analysis, we are increasingly defined by technology and our active participation in everything from Smartphone to Facebook and more.

Technological innovations are arriving faster and faster – becoming less an option and more an imperative. As this reality unfolds upon us, the value of TQ may emerge as a core determinant of success in this crazy place we call the future.

The TQ Matrix & the 5 Essential Components – The inevitable components of Tech Quotient that enrich our lives, every day, in every way!



Experience Technology!



EFYGROUP

espe

SPECIAL ISSUE

estyle

ISSUE 01
January 2018



plastics Engineering

January 2017

Global Machinery Trends 2017

- What Beauty is Industry 4.0?
- Robots Rising: Collaborators or Competitors?
- Education Spin-Up Taking a New Approach
- Metallodrugs for Better Tool Design
- ACE Best Papers: Glass-Fiber Composites



Life-enhancing trends
in vogue!

Stay abreast in style!
Grab your eStyle today!

eStyle
FOR FEEL-GOOD FACTOR

To know more:

☎ 011-40596614 / 9599 814 785 🌐 www.thinkestyle.com

Life-enhancing trends
in vogue!

Stay abreast in style!
Grab your eStyle today!

eStyle
FOR FEEL-GOOD FACTOR

To know more:

☎ 011-40596614 / 9599 814 785 🌐 www.thinkestyle.com

Life-enhancing trends
in vogue!

Stay abreast in style!
Grab your eStyle today!

eStyle
FOR FEEL-GOOD FACTOR

To know more:

☎ 011-40596614 / 9599 814 785 🌐 www.thinkestyle.com

Technology,
as easy as it gets!

Mini PCs →



acer

estyle
FOR FEEL-GOOD FACTS

is all about Smart-Tech World



TECHNOLOGY IS REVOLUTIONIZING TRAVEL

Technology,
as easy as it gets!

Solar Powered Speakers



estyle

estyle
FOR FEEL-GOOD FACTS

is all about Smart-Tech World



TECHNOLOGY IS REVOLUTIONIZING TRAVEL

Technology,
as easy as it gets!

Smart Bikes



estyle
FOR FEEL-GOOD FACTS

is all about Smart-Tech World



TECHNOLOGY IS REVOLUTIONIZING TRAVEL



WORKS

Brand Identity

SMILZO™
FASHION SHAPEWEAR



 Yvaki

IOSR

curve11o
LINGERIE




First
Crawl


First
Crawl


First
Crawl



OMAXE
ROYAL
SIGNATURE







Melto
Zero Cholesterol



TASTE & NUTRITION

Melto
Zero Cholesterol

Melto
Zero Cholesterol

Manufactured & Marketed by:
Nandilal Food & Spices
Plot No. 581 K1 No. 581/143
Kanjehwa Industrial Area Delhi - 110063



WORKS

Packaging







Super Royal Herbal
100% Natural

TURMERIC SOAP

FOR CLEAR, GLOWING SKIN
WITH TURMERIC & MALPAMPARADI TALAM

100gm









PACKED & MARKETING BY
EVEREST BEVERAGES & FOOD INDUSTRIES
 Plot No. 19 & 20, Vedyyaspuri Industrial Area, Sector 08,
 Meerut (U.P.) - 250103

fssa 10018051002359

**FOR ANY QUESTIONS, COMMENTS
 OR COMPLAINTS**
 please contact our Consumer Care
 Executive at Everest Address
 Landline No +91-7252838333
 Website : ebfi.consumercell@gmail.com



erplus

OREGANO
 SEASONINGS & CONDIMENTS



NUTRITIONAL INFORMATION

Energy	00
Fat	00%
Total Carbohydrates	00%
Proteins	00%
Sugar	00%

These are approximate values.

INGREDIENTS:

Oregano (Herbs)

BEST BEFORE 12 MONTHS FROM PACKING.

STORAGE CONDITION:

Keep in Close, Dry & Hygienic Place. Close the Lid after use.



PACKED & MARKETING BY
EVEREST BEVERAGES & FOOD INDUSTRIES
 Plot No. 19 & 20, Vedyyaspuri Industrial Area, Sector 08,
 Meerut (U.P.) - 250103

fssa 10018051002359

**FOR ANY QUESTIONS, COMMENTS
 OR COMPLAINTS**
 please contact our Consumer Care
 Executive at Everest Address
 Landline No +91-7252838333
 Website : ebfi.consumercell@gmail.com



erplus

CHILLY FLAKES
 SEASONINGS & CONDIMENTS



NUTRITIONAL INFORMATION

Energy	00
Fat	00%
Total Carbohydrates	00%
Proteins	00%
Sugar	00%

These are approximate values.

INGREDIENTS:

Crushed Chillies (Spice)

BEST BEFORE 12 MONTHS FROM PACKING.

STORAGE CONDITION:

Keep in Close, Dry & Hygienic Place. Close the Lid after use.





WORKS

POPs

Bodycare first
Premium Infant Wear

MOMMY'S FIRST CHOICE

Email: bodycare@bodycareapparel.com | website: www.bodycareapparel.com

This advertisement features three children standing against a light yellow background. A large blue circle at the top contains the 'Bodycare first' logo, which includes a giraffe icon. The children are wearing various Bodycare first clothing items, including tank tops and shorts. The text 'MOMMY'S FIRST CHOICE' is written in blue at the bottom, with contact information below it.

Bodycare first
Premium Infant Wear

MOMMY'S FIRST CHOICE

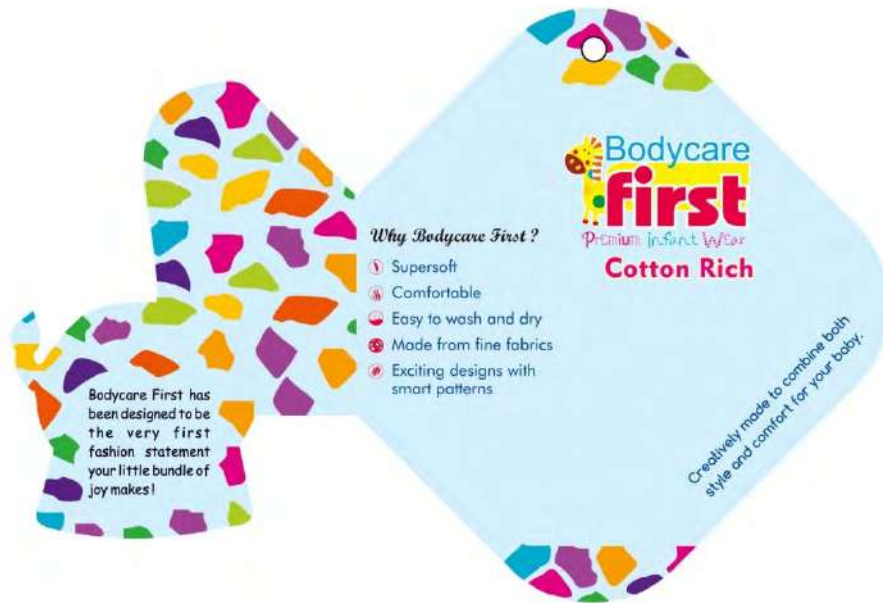
Email: bodycare@bodycareapparel.com | website: www.bodycareapparel.com

This advertisement features three children standing against a light blue background. A large pink circle at the top contains the 'Bodycare first' logo, which includes a giraffe icon. The children are wearing various Bodycare first clothing items, including a t-shirt, pants, and a headband. The text 'MOMMY'S FIRST CHOICE' is written in red at the bottom, with contact information below it.

BACK to BACK

Tag for Boys

Open -Inside



Open - Back





FROM
EVERY
TASTE
TO ANY
FLAVOR



Plot No. 3, Block A-3,
Sector 110, Noida-201304
Contact No. 000-000-000
www.maskamasala.co.in

Follow us on



IT TAKES
TWO TO TANGO

Follow us on

ORDER ONLINE AT
SEÑORPEPE.IN

FOR FREE HOME DELIVERY
0 999 999 9999

Plot No. 3, Block A-3, Sector 110, Noida-201304

IT TAKES
TWO TO TANGO



ORDER ONLINE AT
SEÑORPEPE.IN

FOR FREE HOME DELIVERY
0 999 999 9999

Plot No. 3, Block A-3, Sector 110, Noida-201304

Follow us on



**500 ka khana khao aur
Ek Honda Shine bike le jao...**



Visit Dana Paani, enjoy food items worth Rs 500 or above.
Become eligible for BIG FOODIE-BIG BIKER offer and win
Honda Shine in Lucky Draw.

Dana Paani is a one-stop food destination, offering the tempting flavours of street foods, ethnic favourites and international cuisines with brands like Subway, Dunkin Donuts, Costa Coffee, Pizza Hut, Vango etc.

Modern architecture with a Lively Bollywood theme of Dana Paani embedded with features like handicap friendly structure, children's play area, ample parking space, Wi-Fi enabled among many others make it a preferred destination for travellers on NH-1 as well as residents of Karnal.

Opposite OASIS Resort, Near CHD City, Sector-45, NH-1, Karnal, Haryana-132001 (India)





**Drop in at Daana Paani every weekend
and participate in Bollywood Quiz.
Winners will get free food coupon.**



SINGLE TOPPS (12 NOON TO 11:30 PM)			
VEGETARIAN	00/-	NON - VEGETARIAN	
Veg. and Cheese Quesadillas	00/-	Spicy Chicken Quesadillas	00/-
Masala Jolicha Maza	00/-	Milch Masala Fish N Chips	00/-
Pao Bhai	00/-	Chipotle Chicken Burritos	00/-
Masala Vada Pao	00/-		
Beans, Corn and Cheese Burritos	00/-		
MAKE YOUR OWN PASTA (12 NOON TO 11:30 PM)			
SPAGHETTI OR PENNE			
VEGETARIAN: Onion, Green, Red, Yellow Bell Peppers, Tomato, Broccoli, Mushroom, Corn, Olives			00/-
NON-VEG: Pepperconi, Sausage, Grilled Chicken, BBQ Chicken, Lamb Keema			00/-
Choice of Tomato-Basil, Arrabiata, Alfredo and Walnut Pesto Sauces			
PIZZA MARRA (12 NOON TO 11:30 PM)			
Classic Margherita			00/-
Vegan Delight: Onion, Bell Peppers, Green Chilli, Mushrooms, Olives, Mozzarella Cheese			00/-
Paneer Tikka Nanza: Paneer Tikka, Grilled Vegetables			00/-
Pepperoni Pita Pizza			00/-
Thai Pizza: Peanut Sauce, Thai Chicken, Red Onion, Cucumber, Carrots, Mozzarella Paprika			00/-
SANDWICHES - Plain/Toasted/Grilled Choice of Ciabata, Multi-Grain, White Bread			00/-
		NON - VEGETARIAN	00/-
VEGETARIAN	00/-	Creole Pepperconi	00/-
Mumbai Masala	00/-	Chicken Cheese Chilli	00/-
Cheese and Chilli	00/-	Chicken Tikka	00/-
Vegetable Delight	00/-		
BURGERS			
Veggie Cheesy Burger	00/-	Rodeo Chicken Burger	00/-
Chef's special Three Bean Burger	00/-	Ultimate Mutton Burger	00/-
SOUTHWALE KEBABS (12 NOON TO 3 PM AND 7 PM TO 11:30 PM)			
VEGETARIAN	00/-	NON - VEGETARIAN	00/-
Paneer Ke Snole	00/-	Sarsen Machli Tikka	00/-
Soya Achan Tikka	00/-	Murg Tikka Mirch Masala	00/-
Tandoori Stuffed Aloo	00/-	Murg Malai Tikka	00/-
Tandoori Phool Gulshan Gulshan	00/-	Lahori Surkh Seekh	00/-



Find us on    